



§ BRIEF SPECIFICATION §

FDT Tech Module No: **LOF104X154-30R**

Description: **10.4" Digital TFT- LCD Module**

SPEC No.: **SAS-1506003**

Version: **0.0**

Issue Date: **June 12, 2015**

※ This specification contains 5 pages including the cover and appendix.



Features

- Flat Panel Design
- 10.4" (1024x768) Digital TFT LCD
- Aspect Ratio: 4:3
- Input Signal VGA / DVI-D / HDMI 1.3a
- Maximum Support Resolution 1920x1080
- Stereo Audio Amplifier, Output 2W@4Ω Speaker
- Audio Line-In / Ear Phone (Option)
- Touch Screen 4W Resistive
- 5 Key Buttons Controls
- UART / RS232 (Option) Serial Remote Control
- 8 Languages OSD Menu
- Wide Operation Voltage +11V ~ +28V

Applications

- Industrial
- Medical Environment
- Instrument Display
- Kiosk
- Security
- Signage
- Office Electronics
- Home Application
- Educate Application



Specifications

LCD	
Panel Size	10.4"
Resolution (Pixels)	1024x768
Color	262K
Luminance	288 cd/m ²
Contrast Ratio	500
View Angle	75 / 75 / 60 / 80
Backlight Life Time (LED)	30K (Min)
Power Requirement	
Power Input (DC Jack 2.1 ϕ)	+11V ~ +28Vdc
Power Consumption@+12V	6.6 Watts (@Without Amplifier)
Touch Screen (RTP)	
Resistive Type	USB Interface
Resistive Type Support OS	Windows / Linux / DOS / Mac / QNX
Controls	
Key	5 Buttons
Serial Remote Control	UART / RS232 (Option)

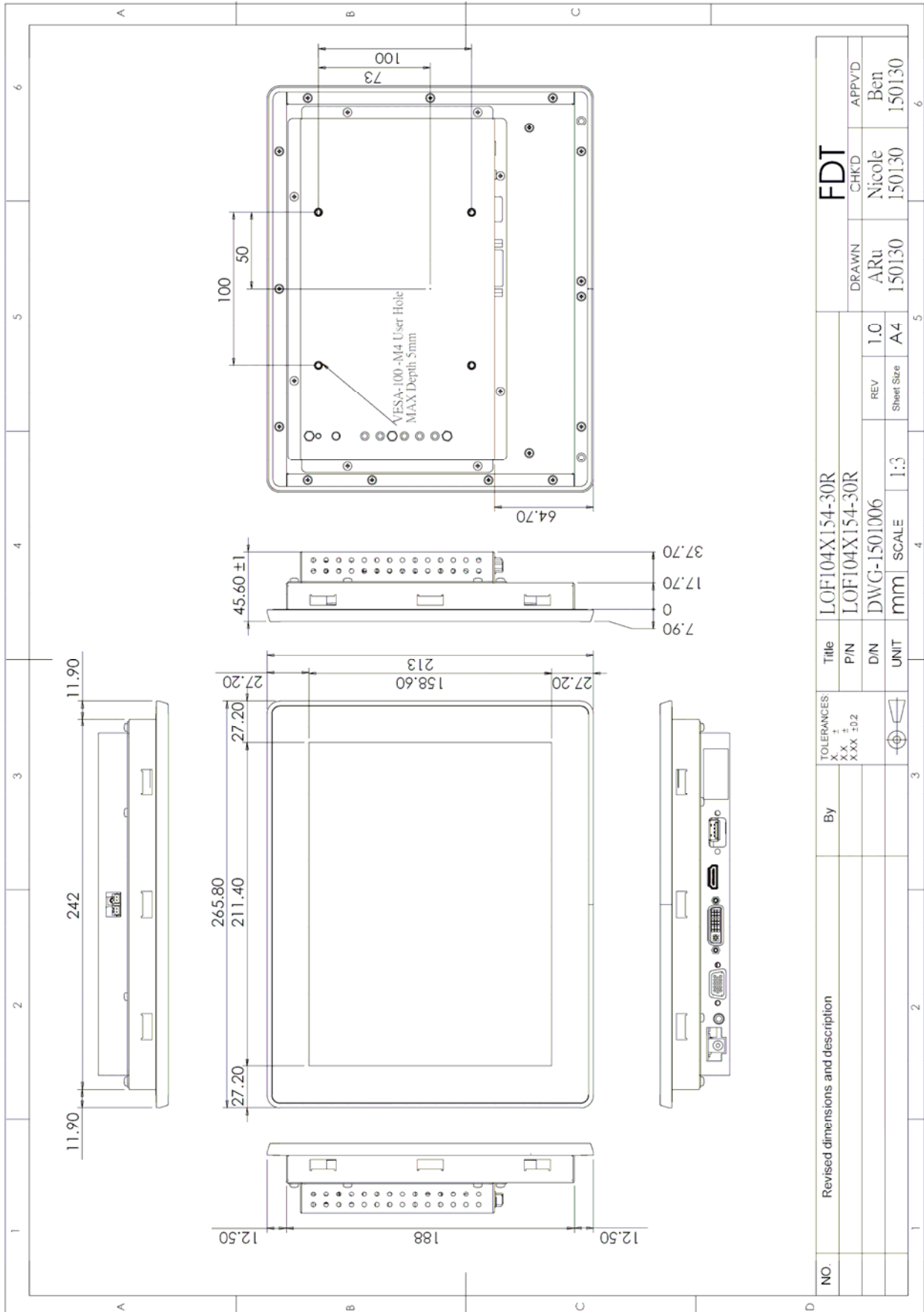
Input Signal	
VGA	D-Sub15
DVI	DVI-D
HDMI	1.3a
Mechanical	
Construction	Aluminum Front Bezel with Completely Covered Membrane and SECC steel chassis
IP Rating	Front Panel IP54 (Option)
Mounting Type	Panel / VESA 100 x 100 Mount
Dimension	265.8 x 213 x 45.6
Net Weight (RTP)	1.5 Kg
Environment	
Operating Temp.	0~+50°C
Storage Temp.	-10~+60°C
Storage Humidity	10 ~ 85%RH @ 40 °C (non-condensing)
Audio	
Amplifier	1W@8 Ω / 2W@4 Ω
Line-In	Stereo Input Phone Jack ϕ 3.5

Order Information

Parameter	LOF104X154-30R
VGA	⊙
DVI	⊙
HDMI	⊙
Touch Panel Type	4W Resistive
Touch Screen Interface	USB
Audio Amplifier	⊙
Audio Line-In	⊙
5 Keys	⊙
UART Remote Control	⊙

Option Function	
Parameter	- Ear Phone - RS232 Remote Control - Accessories

Dimension



Accessories (Option)

Before you begin installing the KIT, please make sure that the following materials have been shipped:



A. LASTD12033-FDR



B. LAACD18000-FDR



C. LACABLE068-FDR



D. LACABLE069-FDR



E. LAVGA16000-FDR



F. LAUSB18000-FDR



G. LACABLE070-FDR



H. LAVCD00002-FDR



I. LASPKR0004-FDR



J. LASCW00003-FDR

- A. AC to DC Adapter (L:1500mm,100-240V_{AC} 50-60Hz to +12V_{DC} @ 3.3A, ϕ 2.1)
- B. Power Cord (L:1800mm, Plug Type B for USA)
- C. HDMI Cable (L:2000mm)
- D. DVI Cable (L:1800mm)
- E. VGA Cable (L:1600mm)
- F. USB Cable (L:1800mm)
- G. AUDIO Cable (L:1800mm)
- H. Touch Screen Driver CD Disk / User Manual
- I. Speaker (2.5W @ 4 Ω L:400mm *2 Pieces)
- J. Mount Clamp and Screw *12 Pieces